

The Newsletter of Milwaukee, Wisconsin's Richard I. Bong Chapter, International Plastic Modelers Society • USA

Officers:

Editor: Jeff Neal,
N50W15770 Maple Crest Ln,
Menomonee Falls, WI 53051,
262-373-0695,
jneal@mcdilldesign.com

President, Paul Boyer
1969 Lakefield Rd, Cedarburg, WI
53012-9110, 414-531-7026,
airflower2@icloud.com

Secretary: John Plzak
2112 W Kimberly, Milwaukee, WI
53221-5061, 414-282-7808,
jplzak@wi.rr.com

Treasurer: Jim Zeske
8228 S. Forest Meadows Dr.
Franklin, WI 53132-8940,
414-529-5208,
p51bmustang@msn.com

Chapter Contact: Jim Erfert
W169 N8924 Hoyt DR #4,
Menomonee Falls, WI 53051
414-526-7160
jim.erfert@gmail.com

The Wingman newsletter is published
monthly by the R.I. Bong Chapter,
Membership is Free

All contents of the Wingman are for
the enjoyment of the members.

Permission to reprint any material
is not required, but please credit
"IPMS Richard I. Bong Wingman."

Deadline for submissions is 10 days
prior to the next "General meeting".

General Meeting Friday, September 14 Water Stone Bank 6560 S. 27th Street
Doors open at 7:00 p.m. Meeting starts at 7:30 p.m.

Business Meeting Wednesday, September 19 at Baker's Square 4900 S. 76th St.,
Meeting begins at 5:30 p.m. • All members are welcome!

Summer? What summer?

I know most of you were probably sweltering and/or enjoying outdoor activities and trips during our stickier-than-usual summer. Along with that, you probably didn't get much modeling done. Yeah, I know. To everything there is a season, and generally, summer ain't the season of modeling, except maybe to go to a model convention/contest or two. I didn't get much modeling done either, but this year was different for me. I pretty much missed summer being cooped up recovering from some health issues that even limited my access to the model bench. Still, I was able to start, restart, and even finish a few models.

And now it's time to shift into higher gear! Autumn is here, and we'll recognize the beginning of the new modeling year with our semi-annual kit auction at our September 14th meeting. Don't forget to bring your \$\$\$ (no big bills, please) or checkbook and get some of the latest kits at bargain prices! Be ready to bid early and often and snag that kit you've been patiently waiting for!

We should also see a few finished models by Doc Funcke for "silent auction." Doc has gifted the club in many ways over the years and wants to bestow our members with some of his built models. Be sure to check them out and bid appropriately on these masterpieces.

Speaking of masterpieces, we'll be looking for the exact opposite at the October meeting. It's "Box of Crap" night where you bring in some examples of your worst work or the crappiest kit that you have resisted building all these years. Why, we might even have a ceremonial smashing/burning of the pile at the end of the meeting! Nah, just kidding. But it is tempting!

See you at the meeting!

— Paul Boyer

Upcoming Events Compiled by Jim Erfert

September 8 • Port Clinton, OH

TOL-CON 2018, Liberty Aviation Museum, 3515 E. Stata Rd, Port Clinton, OH, 43452
Phil Palmer, palmerphilip@msn.com

September 8 • St. Louis, MO

9:00am CDT, 13th Annual Model Contest & Swap Meet. Holiday Inn St. Louis Southwest-- Route 66, 10709 Watson Road, St. Louis, MO, 63127 Chris Merseal, crm@inlink.com

September 9 • Rockford, IL

WW2 reenactment
6799 Guiford road Midway village museum
Rockford Il.

September 28-30 • West Allis, WI

Maker Faire, Wisconsin State Fair Park, <https://milwaukee.makerfaire.com/>

September 29-30 • Greenbush, WI

Civil war re enactment at the Wade House
Historical site.

October 13 • Racine, WI

EAA Chapter 838, "AVIATION FUN FEST"
Batten International Airport, 3333 N. Green Bay RD, Racine, WI www.eaa838.org

October 27 • Milwaukee, WI

18th Annual Larry Peters Classic Model Art Show, "THE HAM SHOW" Lake Lodge Masonic Hall, 1235 E. Howard Ave. Milwaukee, WI 53207
Michael Luedke Highlanderforensic@sbcglobal.net

November 3 • Oshkosh, WI

21st Annual Winnebago Area Model Classic & Swap Meet. Oshkosh Hilton Garden Inn, Exit 116 East from Interstate 41.
For More Information Call Don Molitor 920-420-1430
email WAMClassic@gmail.com
Website WAMClassic.wix.com/wamc

January 19, 2019 • Darien, IL

Planes, Trains and Automobiles Plastic Model Kit & Model Railroad Swap Meet and Show
Saint John Lutheran Church, 7214 Cass Ave.
Darien, IL, 60561. 9 am to 3 pm, Approximately 6 blocks S. Of I-55 and Cass exit.

Flyers w/maps for these events are sometimes available at the general meetings or by calling me. Please take copies only if you plan to attend. The IPMS/USA website has info on most of these events. Check it out.

As a reminder to myself, the Winnebago Area Model Classic/Contest is scheduled for Saturday, November 3 at the Hilton Garden Inn in Oshkosh. See WAMClassic@gmail.com and www.WAMClassic.wix.com/wamc and/or www.facebook.com/WAMClassic/ for more info.

Let's not forget TRAINFEST America's Largest Operating Model Railroad Show being held at State Fair Park Expo Center in West Allis on November 10-11. See www.trainfest.com for ticket prices and lots more info.

And, then, there's Attack of the Plastic Model Contest & Swap at the Johnstown Community Center in Johnstown, WI on December 1.

I've been working on Monogram's ancient kit of the 1932 Cadillac V16, kit no. 2305, copyright 1980 by Monogram Models, Inc., Morton Grove, IL. The paint used on the fenders is Tamiya Spray Can no. 1204 Gloss Dark Red. The paint on the chassis WAS Model Master 28008 Ford Engine Red; but, in the photo below, is Tamiya Spray Can PS-2 RED. The reason for the change is that when the Model Master Red without primer was masked for the trim, all the paint came off in sheets with the masking tape. Needless to say, that experience was devastating. So, just to be sure, a coat of Floquil R11 Reefer White was applied before adding the Tamiya RED. Obviously, the masking for the paint trim was successful the second time.

So, lesson learned! Gloss paints on plastic kits . . . maybe a coat of some kind of primer is a very good idea, especially if masking is required. The nice thing about the Floquil is that it is a type of lacquer where the "hot" thinner etches the plastic when wet and provides very good "TOOTH" for the coming coats of gloss paint. I'm trying to finish this model in time for the September club meeting.



On another subject, I have finally remembered to get my private contest model kits up out of the basement stash. Here is what will be available 1st come, 1st served at the September meeting.

- Bachmann/Fujimi no. 0787 Samuri Model 21 1/48th
- Fujimi no. 5A23-400 (23) Mitsubishi A6M2 Zero 1/48th
- Bachmann/Fujimi no. 0786 N. A. P-51D Mustang 1/48th
- Fujimi no. 5A14-300 (14) Focke-Wulf Fw190D-9 1/48th
- Fujimi no. 5A14-400 (14) Focke-Wulf Fw190D-9 1/48th
- Fujimi no. 700 (P-6) Focke-Wulf Fw190D-9 1/48th
- Fujimi no. 30001 (P-1) Messerschmitt Me109G-K 1/48th
- Fujimi no. 5A26-800 (26) Messerschmitt Bf110C 1/48th
- Fujimi no. 5A28-900 (28) Messerschmitt Bf110D 1/48th
- Fujimi no. 48014 (J) Messerschmitt Bf109G-5
"Hohenjager" 1/48th
- Fujimi no. 48001 (J-1) Messerschmitt Bf109K-4 1/48th
- Fujimi no. 48002 (J-2) Messerschmitt Bf109G-6
"Mullepux" 1/48th
- Fujimi no. 48003 (J-3) Messerschmitt Bf109G-14/AS
"Peterle" 1/48th
- Fujimi no. 48010 (J-8) Messerschmitt Bf109G-6trop
"Tropical PIK-AS" 1/48th
- Fujimi no. 48012 (J-9) Messerschmitt Bf109G-10/R2
"Photo Recon" 1/48th
- Fujimi no. 27031 (Q-11) Messerschmitt Bf109G-6 Super
Ace "Hartmann" 1/48th

Rules for this contest will be the same as last time. You get your choice of kit for free if you finish building and display at the March general club meeting. If the kit you choose is not finished by the March meeting, you'll owe me \$10 for the kit. Awards will again consist of collectible coins for the Best six models produced.

Finally, due to the regularly scheduled semi-annual club auction, we will delay offering more of the Doc Funcke kit collection until October.

—AJ

The Trilogy Connection September Update

Hi Guys, Things are moving along again (for some of us). As you can see by the photos Jeff Neal is still leading the pack with Ed a close second.

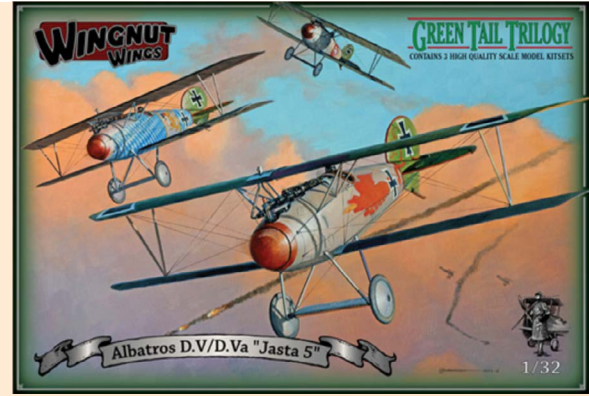
I was hoping to be done with my Pfalz D.IIIA, so I could join in on the Albatross build. I thought the red and white color scheme would be easy to do, but you really don't want just red and white, there is some weathering involved and I think I over did it! The white looks a little too dirty for me (Jeff says, Eh, it will be fine) but I am my own worst critic!

I think that is what this Hobby is all about; when I finish a model the most important person I want to please is me. If it looks right to me that is all that really matters.

So, I have set it aside until I can decide whether to leave it as is (I have too much work in it to relegate it to the "Shelf of Doom") or strip it and redo it in other markings. I had one plane I redid three times before I was satisfied! In the mean time I have started my Albatross of the Trilogy.

I think I will bring the Pfalz to the next meeting and see what you think.

—Jim



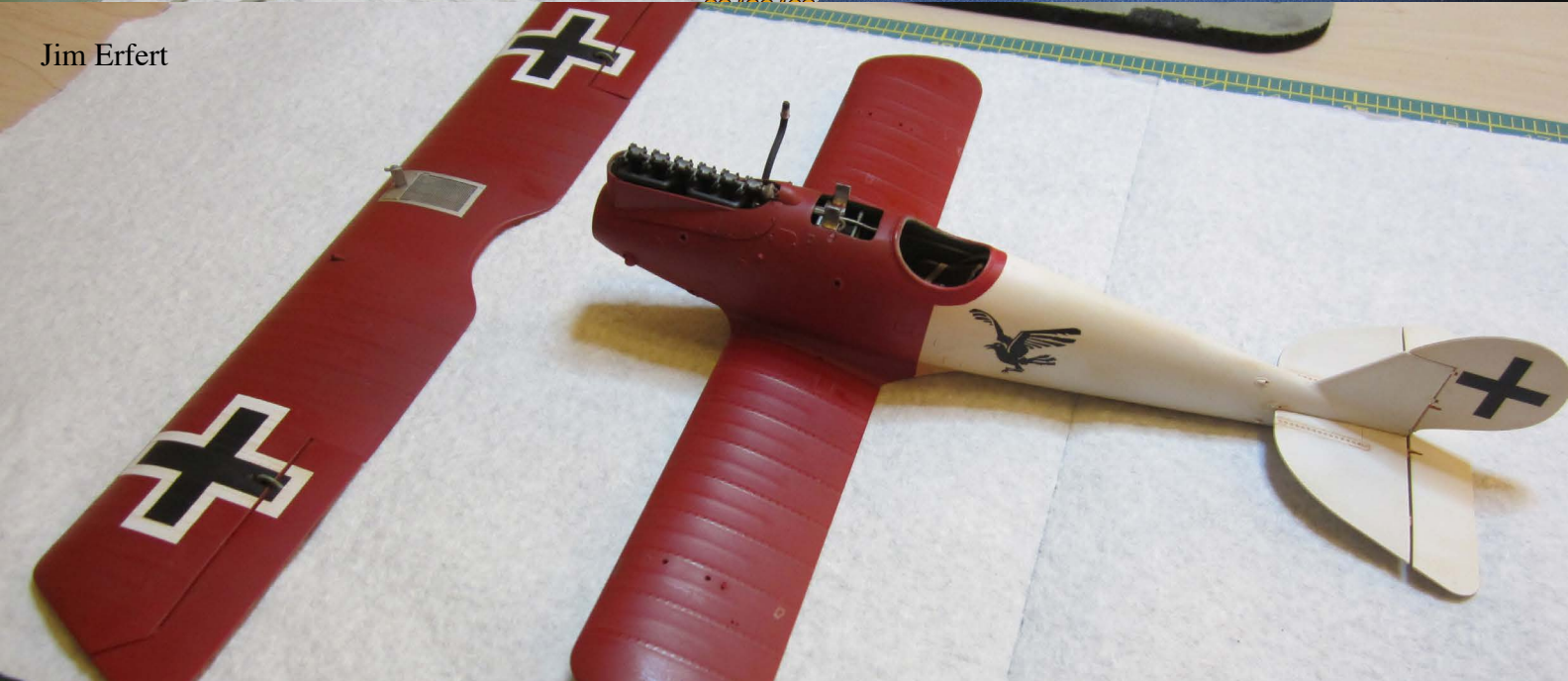
Jeff Neal



Ed VanBrabant



Jim Erfert



Secretary's Notes by John Plzak

Eight members attended the August business meeting. As we approach the end of the year (where did summer go) most of the rest of the meetings are pretty much all ready planned. Of course for the September meeting we will have our second of the year club auction. Please remember to bring cash or your checkbook. You must be a member to bid at the auction, but if you walked in the door then your a member. Also we hope that Al Jones will remember to bring his Fujimi kits for his Fujimi kit build contest. (Would someone remember to remind me the night before the meeting to email Al to remind him to bring the kits).

For the October meeting the plan is to auction off some more of Doc Funcke's built up models (silent auction I presume) as well as a box of unbuilt kits. Also the theme will be your BOC (Box of cr*p) kit. Bring along a kit that you bought (built or not) that once you opened the box you went "why the heck did I buy this kit??. We'll give you a few minutes to show it off and tell us why it's a BOC. We will also be looking for nominations for club officers. Let's face it guys, the current e-board has been in place for what seems decades. While we are glad you seem

happy with how we are running the club, none of us are getting any younger. And while its not a huge job to be an officer it does require a commitment to spend a little more time dealing with club business. It wouldn't hurt to see some younger members step up. Trust me you won't hurt any of the current e-board feelings if you were to run for office. Don't want to nominate yourself? Tell the person next to you to nominate you.

Of course the November meeting will be our annual club contest. Dr. John Werwie does not have any changes to the contest format this year. He does need volunteers to man the various functions of the contest, so if your interested, cheek with John.

That's it for this month. I'll see you at the meeting.

— JP

2018 Meeting Schedule

Sep	Club Auction
Oct	Officer Nomination, BOC night
Nov	Annual Contest
Dec	Christmas Party, Awards Presentation

Ed's Car Corner by Ed Doering



Kit Number 994 • Scale 1/35

Kit Manufacturer – Bilek

Dodge WC-54 Ambulance Skill Level – 3 or 4

A few months ago, I reviewed a DUKW amphibious truck kit, and since then, I've received favorable comments on my review of that kit, plus a few requests to do another review or two of military vehicles. So, with that in mind, I've decided to review the Bilek Dodge WC-54 Ambulance kit this month.

I'm not sure how this Bilek company from the

Czech Republic works, but on the box, it states that the parts for this kit are actually done by Italeri, and possibly only distributed by Bilek? No matter what the case on that may be, rest assured, this is a good kit, issued in 2004.

The kit comes in the rectangular, tray type box, with good box art of the model you can build. The box art also serves as a decal placement guide, although there is one included with the instruction manual, which is rather large.

Instructions themselves are sort of like the old 1960s type kit instructions, whereby you do get pictures with arrows showing where parts are to be assembled, along with written out instructions to guide the builder along. The instruction sheet was done by both Testor's and Italeri. I rather like that, and wish more kits had these written out guidelines. There's also a sort of miniature instruction sheet included from Bilek.

The kit contains two, medium-sized medium gray plastic trees, with virtually no flash on them. Moldings are very crisp, and an effort was made to conceal ejector pin marks. A small, clear tree holds the glass pieces for this ambulance, while two decal sheets are included for the white and red crosses found on wartime ambulances, a nice touch.

In 1937, the U.S. Army issued a directive for a $\frac{3}{4}$ ton truck to replace the $\frac{1}{2}$ ton vehicles then in production. The result was the Dodge WC series of military trucks.

During the pre-war years, the Army had relied on converted civilian trucks for military duties. New specifications required purpose-built vehicles with different weight capacities, these being $\frac{1}{4}$, $\frac{1}{2}$, $1\frac{1}{2}$, 4 ton and 7 ton.

The $\frac{1}{2}$ ton series produced by Dodge were essentially a civilian design with the required military modifications. After several years of service, it became apparent that a slightly larger, more sturdily built truck was needed. Some of the civilian parts proved to be inadequate to stand up to the stresses of military service.

At this time, the Army also decided to eliminate some of the short comings apparent in the earlier trucks. New requirements demanded a lower silhouette, larger body, better towing ability, larger diameter tires, stronger running gear, military pattern wheels with bolt on rims, and a slightly larger engine.

The result was the Dodge $\frac{3}{4}$ ton WC series of trucks. Twelve different types of bodies were available for different purposes. Over $\frac{1}{2}$ million $\frac{3}{4}$ ton trucks were built, and soldiered on in many countries till well after the war.

Let's examine this kit! On the front of the instructions, there are paragraphs dealing with the preparation of parts. It's worthwhile to look that area over, although most of us are aware of what's stated there. There is also an area covering painting of the parts. And in the lower corner of the front page of instructions, there are specifications on the Dodge WC-54 ambulance.

There are 9 assembly blocks to complete this model. At each block, there is a nice note telling you the numbers of the parts you'll need for each assembly block, as well as a preliminary painting guide, telling you the colors to use on various part numbers in each block. This proves very helpful as you tackle each block of assembly.

Then we start in on assembly block 1, in which the front cross member is attached to a nice, one piece frame. This is how all military truck kits should be. 1/25 car kits usually have one piece frames, so one has to wonder why some kit makers insist on separate frame rails, and tons of pieces to build up the

frame? One piece is much easier to deal with.

Also, with the technology available, as shown via good 1/25 car kits, it puzzles me as to WHY kit makers insist on multi-piece bodies for military trucks, when the technology is there to produce one piece bodies? Getting all those multi-piece panels etc. aligned can just present a lot of fit issues.

Next, the transmission is inserted into the frame, and the drive shaft is attached to the transfer case. Once that is dry, the transfer case is mated to the chassis, making sure that the transfer case meets up with the rear end of the transmission. Check the fit and angle of the drive shaft with the transfer case.

Also in block 1, the rear tow hook/pintle is glued to the rear of the frame, as well as the left and right rear bumpers, being sure to align them level and straight. The fuel tank is then glued to the bottom of the frame. And the front bumper is attached to the front of the frame. Again, check to see that it's level and straight on the front of the frame.

In block 2, the exhaust pipe is placed into the locating holes on the underside of the frame. The left and right front springs get attached to the front of the frame, again being sure that they are level and straight. There are notches on the frame rails to help guide you. The rear springs are attached in a likewise manner.

Moving to block 3, the gear case is attached to the front differential, and when dry, one brake drum is placed on to the end of the front differential. Insure they are on straight! The tie rod's then placed onto the bottom of the front differential. There are pins to help align it properly. Next, the left and right spindles are mated with the differential and tie rod. These parts are small, thin, and rather fiddly, so take your time.

Also in block 3, the front drive shaft is attached to the front differential, then you glue the differential to the front springs, making sure that the pin on the end of the drive shaft mates up with the hole in the transfer case.

Next, we glue the gear case to the rear differential, and again add a brake drum to each end of the rear differential. The drive shaft is then added to the differential, and the differential is attached to the rear springs, making sure that the pin on the end of the drive shaft again mates to the hole in the transfer case.

Moving on to block 4, we deal with the floor board, seats and gear shift, parking brake, and transfer case lever.

These parts are attached to holes in the floor. The seat backs are attached to the seats, and when dry, they are glued to the floor.

Also in block 4, the right cab panel is attached to

the floor. Be sure to get it on straight, and attached to the attachment points on the floor. The radiator is also attached to the right cab panel and floor. Finally, the left cab panel is attached to the radiator and floor, being sure everything aligns well. Take your time, and allow parts to dry, before adding additional parts. It's important to get these cab parts together straight etc.

After painting the interior parts and stretcher areas flat white as directed in the preliminary painting area of block 5, the litter bearer is attached to the left inner wall. Then the litter cushion is glued to the litter bearer. The stretcher racks are added to notches in the left inner wall. Basically, you then repeat this assembly for the right inner wall.

When dry, the left inner wall is glued to the notch and lip of the floor. Then, the right inner wall is attached to the opposite side of the floor, being sure to get things aligned straight etc. Set these assemblies aside to dry well, and when dry, the roof inner panel is glued to the ribs at the top of the side panels, again setting this entire assembly aside to dry well.

In block 6, the front inner roof panel is glued to pins inside the upper cab piece, and when dry, the dashboard is glued to the inside of the upper cab. The steering wheel is added to the steering column, and when dry, this assembly is added to the underside of the dashboard.

Also in block 6, the left inner door panel is glued to the left door, and the right inner panel to the right door. Then, the upper cab is glued to the cab side panels, making sure that the steering column passes thru the hole in the firewall. It then states to glue the left and right doors in place before adding the left and right windows. Although, it may be best to add the windows to the doors, and then attach the doors to the cab. Use glue made for clear parts here.

In block 7, the Pitman arm is glued to the chassis and spindle. Then, the left and right outer wall is glued to the locaters on the inner wall panels. Next, the outer roof is attached to the upper cab and side wall panels. Take your time here, to insure everything lines up well. Then, the ventilator panel is attached to the holes in the roof.

Also in block 7, the left and right running boards are attached to the frame. Then, the wheel halves are glued together, making sure to sand out any seams. You need to make 4 sets. The wheels are then placed on their axles. It's advised to SLIP (do not cement) one wheel over an axle, and then carefully glue one retainer hub to the tip of the axle. Do not get glue on the wheel, or the wheel will not roll. The process is then repeated for the remaining 3 wheels.

Next, the spare tire halves are glued up, and added to their place as shown in the instructions.

The fuel filler is added to the side of the body, and the tow hooks to the front of the frame rails. The windshield is then glued into the front of the cab.

In block 8, the left and right front fenders are added to the side of the body, and the headlights are glued to the innermost holes on the top of each fender. Signal lights are glued to the next hole out on the fenders. The blackout light is added to the remaining hole on the left fender.

Also in block 8, the grill is attached to the front of the body, and windshield wipers to the holes above the windshield. Then, the rear view mirror is glued to the upper hinge on the left door.

Finally in block 9, the pick handle, shovel, axe, and pick head are glued to the tool rack, and that unit is attached to the side of the body.

A note is made that the kit can be built with the rear doors open or closed.

For the open option, the left and right rear windows are glued into the left and right doors, and the doors to hinges in an open position. The step plate bracket and bracket hinges are glued in position on the rear of the model so that the bracket hangs down. Glue the step plate to its bracket at a right angle, so that the plate is parallel to the ground.

For closed rear doors, you just glue the doors in a closed position on the body. The step plate is then glued to the back side of its bracket, and the step plate bracket and hinges are glued to the rear of the model in a folded position. Notes are shown as to how this assembly should look.

A decal placement guide is included with decal instructions. The overall color for this ambulance is of course Olive Drab.

Then, a rather extensive page is included entitled – Weathering Hints. It very well details out how those not familiar with weathering, can step-by-step approach basic and advanced weathering of this model. It's well worth the time to read it over.

I would rate this model at skill level 3, possibly 4, because of the need to align parts in exacting positions, so that the truck's multi-piece body parts mate well etc.

The arrows, along with written out instructions, make for a precise method to follow with each part, at each assembly block, with notes on painting parts dealt with at each block. If you follow that along thru-out your build, take patience and time for things to set up and dry, you should arrive at a rather nice model. Grab one, and have fun with it. The kit gives you a wide open base to apply weathering techniques too, as well as good material for a war time diorama.

—ED

There were 28 model Information cards filled out. Please make sure you fill out the Model Information cards. **Please fill them out clearly.** I enter what I can read and my eyes aren't what they used to be. **Also please leave them on the display table.** The format of this list is: Modelers name, Item being displayed, Kit Manufacturer and Scale.

Editors Note: In an effort to show more club models I have added more pages of finished models. If you do not see your model it is because I could not see the name card associated with the model in the photo.

Dave Hansen NiK2-J "George" Hasegawa 1/72, Ki-61 "Tony" Hasegawa 1/72, Ki-44 IIb "Tojo" Hasegawa 1/72, Ki-43-1Ia "Oscar" Hasegawa 1/72, Ki-84-1a "Frank" Hasegawa 1/72

John Clancy Chevrolet Confederate Roadster Tashimasa Mitsutake ? (Paper), BMW 2002 Cabriolet Ichiyama 1/30 (Paper)

Randy Bressler Marden II Dragon 1/35

Vince Cortez M706 Commando Armored Car Hobby Boss 1/35, PzKpfw 3st/Skoda LtVz 35 CMK 1/35

Ed Doering AD-5 Skyraider Matchbox 1/48

Chris Cortez Tie Stricker Bandai 1/72, F-5E Kitty Hawk 1/32

John Plzak Panther Ausf A Takome 1/35, Panther Ausf G

Late Ryefield 1/35, Shot Kal Alef AFV Club 1/35

Chuck Davis Rolls Royce Armored Car RPM 1/72

Vlado Jovic L-29 AMK 1/48

Mike Scharf V2 Rocket Launcher Takom 1/72

Al Jones Ju-87G-1 Stuka Revell 1/48

Wayne Mueller Centurion Mk3 Tamiya 1/35

Tom Foti Centurion AFV Club 1/35

Matthew Walker Su-35 Kitty Hawk 1/48

Mike Klessig Phantom FG.1 Airfix 1/72, Ferguson TE-ZO

Heller 1/24

Jeff LaMott Dodge Van Lindberg 1/25

Bill Cook Green Roadster AMT 1/25

Paul Johnston Ferrari 275 N.A.R.T. Spyder Italeri 1/24



Dave Hansen Ki-61 "Tony" Hasegawa 1/72



Dave Hansen Ki-43-1Ia "Oscar" Hasegawa 1/72



Dave Hansen Ki-44 IIb "Tojo" Hasegawa 1/72



Dave Hansen NiK2-J "George" Hasegawa 1/72



Vlado Jovic L-29 AMK 1/48



Al Jones Ju-87G-1 Stuka Revell 1/48



Dave Hansen Ki-84-la "Frank" Hasegawa 1/72



Ed Doering AD-5 Skyraider Matchbox 1/48



Mike Klessig Phantom FG.1 Airfix 1/72



Matthew Walker Su-35 Kitty Hawk 1/48



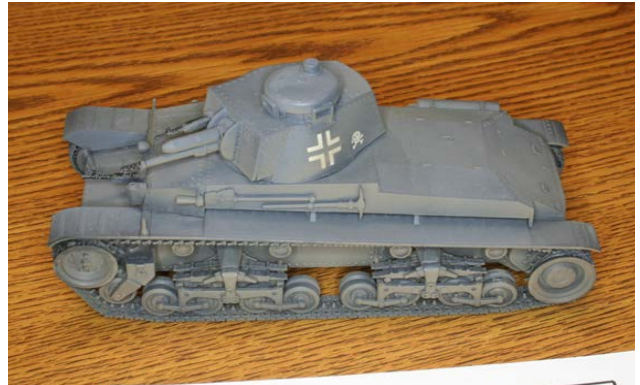
Chris Cortez F-5E Kitty Hawk 1/32



???



Vince Cortez M706 Commando Armored Car Hobby Boss 1/35



Vince Cortez Pzkwf 3st/Skoda Ltz 35 CMK 1/35



John Plzak Panther Ausf G Late Ryefield 1/35



John Plzak Panther Ausf A Takome 1/35



Chuck Davis Rolls Royce Armored Car RPM 1/72



Tom Foti Centurion AFV Club 1/35



John Plzak Shot Kal Alef AFV Club 1/35



Wayne Mueller Centurion Mk3 Tamiya 1/35



Paul Johnston Ferrari 275 N.A.R.T. Spyder Italeri 1/24



Bill Cook Green Roadster AMT 1/25



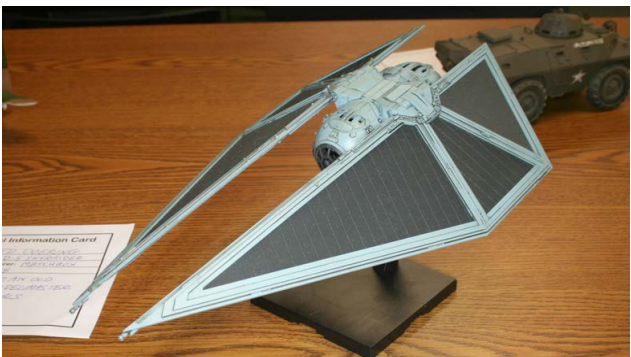
John Clancy BMW 2002 Cabriolet Ichiyama 1/30 (Paper)



John Clancy Chevrolet Confederate Roadster Toshimasa Mitsutake ? (Paper)



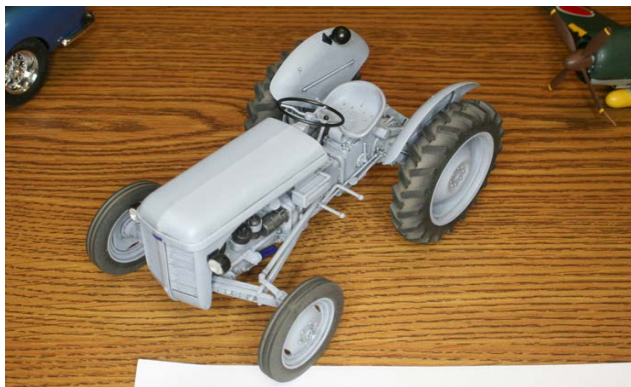
Randy Bressler Marden II Dragon 1/35



Chris Cortez Tie Stricker Bandai 1/72



Mike Scharf V2 Rocket Launcher Takom 1/72



Mike Klessig Ferguson TE-ZO Heller 1/24



Jeff LaMott Dodge Van Lindberg 1/25

Excellent work EVERYONE!!!

MODELCLUB

A PROJECT OF WISCONSIN 4-H

RECIPIENTS OF A PRESIDENTIAL COMMENDATION FOR SERVICE TO
THE ARMED FORCES

RECOGNIZED BY THE US CONGRESS FOR COMMUNITY SERVICE

PRESENTS

THE 18TH ANNUAL LARRY PETERS CLASSIC MODEL ART SHOW

Presented In Association With Forensic Research Associates

“THE HAM SHOW”

SATURDAY OCTOBER 27, 2018

**OPERATION
BAGHDAD BEAVER**

**2 FREE 1.00 RAFFLE
TICKETS FOR EACH
REGULAR MODEL KIT
DONATED**

**ALL MODELS RAISED
GO TO
ZABLOCKI VA HOSPITAL
REHABILITATION
DEPARTMENT AND
DOMICILIARY**

**LAKE LODGE MASONIC HALL
1235 E. HOWARD AVE.
MILWAUKEE, WI. 53207
(IN ALMOST MYTHICAL BAY VIEW)**

**REGISTRATION 9:00AM – 12 NOON
RAFFLE 2 PM
AWARDS 3 PM**

**SHOW JUDGED PER
MODIFIED CHICAGO RULES**

ENTRY FEES

**\$ 5.00 FOR THE 1ST MODEL
\$ 3.00 FOR SECOND MODEL
\$1.00 EACH FOR 3RD MODEL AND AFTER**

**SPECTATORS SUGGESTED DONATION \$ 1.00 PER PERSON
FIRE, POLICE, EMS AND ALL US MILITARY WITH ID AND ALL US MILITARY AS SPECTATORS FREE
All Lodge Members Free**

**ALL MONEY RAISED WILL BE DONATED TO
THE RONALD MCDONALD HOUSE CHARITIES OF EASTERN**

WI.

**ADULT GRAND CHAMPION PRIZE
A BUTT PORTION 1/2 BONE IN SMOKED HAM 6-8
LBS**

**ADULT RESERVE GRAND CHAMPION PRIZE
A 15 LB OR LARGER
TURKEY**

**JUNIORS GRAND CHAMPION
THE RICK TAYLOR AWARD**

**JUNIORS RESERVE GRAND CHAMPION
THE STEVE MALIA AWARD**

**THE ERIC ANDERSON AWARD
BEST HANDPAINTED MODEL AIRCRAFT**

**BILLY MITCHELL AWARD
BEST TWIN ENGINED BOMBER**

Aviation Fun Fest

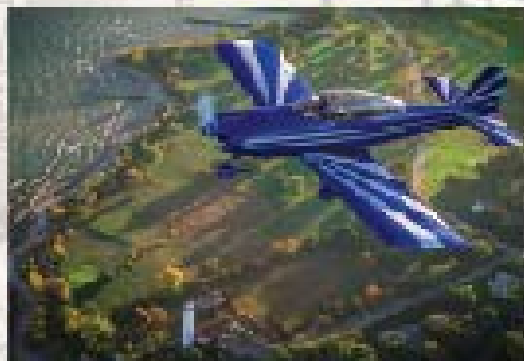
Celebrating Racine's Rich
Traditions of Aviation and Community
Saturday, October 13, 2018

**FREE
ADMISSION**

EAA Chapter 838
Batten International Airport
3333 N Green Bay Rd, Racine, WI

8:00 a.m.- Noon

Everyone's Favorite Pancake Breakfast
Adults \$7, Children \$3



8:45 a.m.
Young Eagles Rally
Youth ages 8-17

- learn about aviation,
- fly with a pilot
(weather permitting)
- try our flight simulators

11:00 a.m.-2:00 p.m.

Community Partners Bar-b-que
Hamburgers, Hot dogs, Brats, and Beverages for sale

Our Thanks to:

Aviation Advisor, Inc
IPMS R.I.Bong Chapter Model Club
Centurion Aviation
Civil Air Patrol, Racine Composite Squadron
Dr. Sontino & Anna Bedogne DC
Delta Hawk
Educators Credit Union
Explorers Post 218
Foxy Squares
Gateway Technical College Drone Mapping
Gateway Technical College Pilot Training
Just Add Kids
Wisconsin Humane Society, Racine Campus
Racine Sport Flyers
River Bend Nature Center
Three Harbors Council, Boy Scouts of America
Young Aviators
Young Eagles



**FREE
ADMISSION**



EAA Chapter 838
www.eaa838.org
(262) 634-7575
events@eaa838.org





AVIATION FUN FEST

Celebrating Racine's Rich Traditions of Aviation and Community

Racine, WI, August 23, 2018 – Chapter 838 of the Experimental Aircraft Association will host an aviation and community festival on Saturday, October 13, 2018. The event will include aircraft displays, free plane rides for youth 8-17, community health and safety organizations, and lots of great food. The Chapter museum will be open. All are invited to this free event.

The Aviation Fun Fest will provide fun and information about resources available in the Racine area. The famous annual Pancake Breakfast will be held from 8:00am to noon. Admission to the breakfast is \$7 for adults and \$3 for children. Our Community Partners Bar-B-Que will be from 11:00 to 2:00. Community vendors will be on display from 11:00 to 2:00 with opportunities to learn about organizations in the community ranging from the Civil Air Patrol to Chiropractic Services to the Educators Credit Union. **Youth ages 8-17 who want a free plane ride should arrive at 8:45 am.**

ABOUT EAA CHAPTER 838

EAA Chapter 838 is a non-profit organization, and is the local representation of the Experimental Aircraft Association. The Chapter promotes youth education and serves to offer youth opportunities through STEM to create a future for themselves in aviation or aerospace. The Chapter also provides an outlet for local private pilots to learn, build and fly.

Contact: Peter Bianco
EAA Chapter 838
3333 N. Green Bay Rd.
Racine, WI 53404
Phone: 262.634.7575
Email: info@eaa838.org

WAMC

UPDATE

FACEBOOK

I will be posting to WAMC Facebook. Keep Checking as I will announce & share sponsors, trophy designs, vendors and more. Also if any of you have photos you want shared put them on the page or send them to me and I will take care of it for you.

WEBSITE

I will have the Web Site updated and completed by August 14th. Then will keep adding information as it becomes available.

SPONSORS

I have sent out many sponsor packets and even hand delivered some. As sponsors get back to us we will be posting their names on facebook, on the web page and in our newsletter.

VENDORS

Ralphs Models will be in attendance again! Ralph brings over 1000 kits!

Susan will also be back, with her vintage aircraft models.

Thanks to both for early confirmation!

Winnebago Area Model Classic

Saturday
Nov. 3 2018

21st Annual

WAMC OSHKOSH

Scale Model Contest & Swap Meet

Hundreds of models on display, hundreds more for sale!! Custom Awards, Raffle, Cash Prizes!!

Event runs from 10:00 AM to 4:00 PM. Open to all Ages!

HILTON GARDEN INN - OSHKOSH, WI
1355 W. 20th Ave. Oshkosh, WI 54902
Exit 116 off Interstate 41

Web: WAMClassic.wix.com/wamc
More Info Contact Don at WAMClassic@gmail.com
Facebook: www.facebook.com/WAMClassic/

General Admission: 3\$, Kids Free!
Model Contest: Adults 10\$, Kids Free!
Building Seminars, Demonstrations, Raffle, Custom Awards
VENDORS SPACES 25\$ per table multi table discounts

SHOW THEME: 1968 The Times They Are A Changin'
Automotive Challenge Class- Revell Bronco /66 Chevy Suburban
Aircraft Challenge -VietNam: F4 Phantom/Skyraider/Huey
Visit our website for complete rules and category listings

BUILD SOMETHING!!!!

Last Years Event had more than 400 models entered!!!

Contest Theme: 1968 the times they are a changin.

Entries will have their own table and this is open to all genres. Aircraft, Armor, Figures, Autos, Sci-Fi and what ever else you can think to build. There will be a special Award for the Theme Award. Your model must relate to 1968 in some manner. Manufactured, major event, decommissioned what ever you can think of that relates will be eligible.

Ford Bronco vs Chevy Suburban Shootout

Select the 66 Chevy Suburban or the First Gen Revell Bronco Build it any way you want! Street Custom, Drag, Rock Crawler, 4x4, Rust Bucket or what ever you can think of. This will be an additional \$5 entry but the winner takes the money home and award. Also last years winner may have a special something to pass along! You must start with one of these kits. Creativity & craftsmanship will be rewarded!



Viet Nam Air Power Challenge Class

Select the Phantom F4, Skyraider or Huey, build it as it was flown over Viet Nam during the war years and compete for Cash prize and Award. Also last years winner may add some-thing to sweeten the pot! This class will have an additional \$5 entry fee and once again all money goes to the Winner! The kits can be any scale. But they must be one of the three listed subjects!



Please support our local Hobby Shop friends!

Model Empire

7116 W Greenfield Ave
West Allis, WI 53214-4708
(414) 453-4610
www.modelempireusa.net

HobbyTown USA

1704 S 108th St, Milwaukee, WI 53214
(414) 771-5215
htuwestallis@sbcglobal.net

Happy Hobby

7125 N 76th St
Milwaukee, WI 53223-5007
(414) 461-6013
www.happyhobby.com

see our other greater Milwaukee locations

Adventure Game & Hobby

248 Maple St
Waukesha, WI 53186
(262) 548-9177
www.adventuregamesplus.com

WANTED

Any and all model military kits. If you have come to the conclusion that you will never have time to build all of your kits, now is the time to turn those unwanted kits into cash. I'm a dealer that needs inventory for kit shows. I'm only interested in complete, unbuild examples. Thanks — Pete Gitzel

262-895-2975 home • grizzly3@wi.rr.com • 414-331-3339 cell

Military Collectibles Shop

9106 W. Greenfield Ave
West Allis, WI 53214
(414) 727-1190
militarycollectorsHQ.com

IPMS/USA MEMBERSHIP FORM

IPMS No.: _____ Name: _____
If Renewing First Middle Last

Address: _____

City: _____ State: _____ Zip: _____

Phone: _____ E-mail: _____

Signature (required by P.O.) _____

Type of Membership Adult, 1 Year: \$30 Adult, 2 Years: \$58 Adult, 3 Years: \$86

Junior (Under 18 Years) \$17 Family, 1 Year: \$35 (Adult + \$5, One Set Journals) How Many Cards? _____

Canada & Mexico: \$35 Other / Foreign: \$38 (Surface) Checks must be drawn on a US bank or international money order

Payment Method: Check Money Order

Chapter Affiliation, (if any): _____

If Recommended by an IPMS Member, Please List His / Her Name and Member Number:

Name: _____ IPMS No.: _____

IPMS/USA

Join or Renew Online at: www.ipmsusa.org

PO Box 56023

St. Petersburg, FL 33732-6023



Call Todd Augustine for a quote

email: taugustine@amfam.com

Tel: (414) 755-8890

Toll Free: (800) 692-6326

11616 W. North Ave Ste. D
Wauwatosa, WI 53226